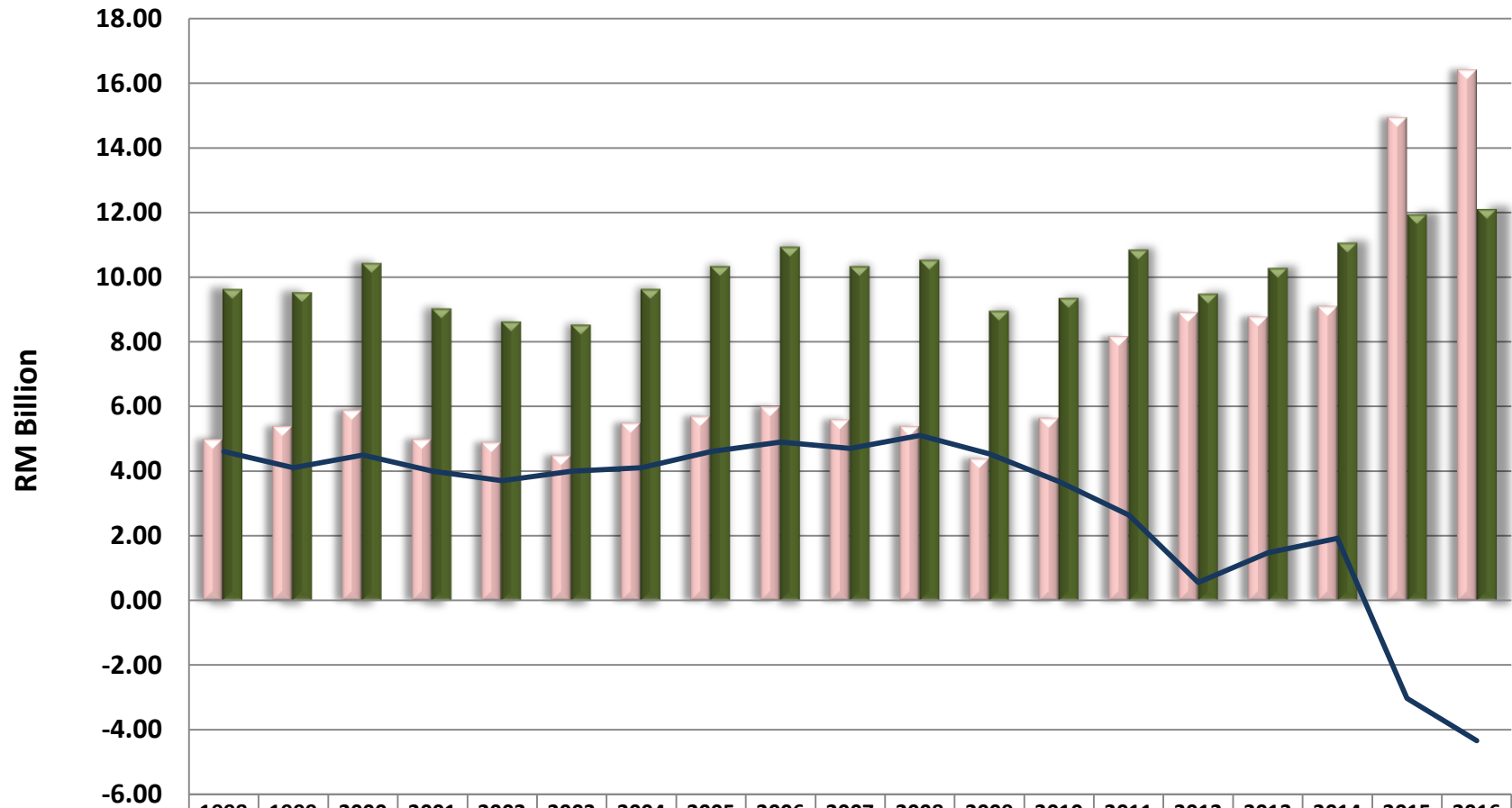


马来西亚纺织与服装贸易表现 Malaysia's Total Textile & Apparel Trading (1998-2017)



	1998	1999	2000	2001	2002	2003	2004	2005	2006	2007	2008	2009	2010	2011	2012	2013	2014	2015	2016
进口 Import	5.00	5.40	5.90	5.00	4.90	4.50	5.50	5.70	6.00	5.60	5.40	4.40	5.65	8.17	8.91	8.78	9.10	14.93	16.40
出口 Export	9.60	9.50	10.40	9.00	8.60	8.50	9.60	10.30	10.90	10.30	10.50	8.93	9.33	10.81	9.46	10.25	11.03	11.90	12.06
盈亏 Balance	4.60	4.10	4.50	4.00	3.70	4.00	4.10	4.60	4.90	4.70	5.10	4.53	3.68	2.64	0.55	1.47	1.92	-3.03	-4.34

Source: DOS, Malaysia Compile by MKMA